



**PORT AUGUSTA  
OPERATIONS**

# Introducing Port Playford

The new export facility by Port Augusta Operations

Community Update on the former Port Augusta Power Station site  
August 2020

## Port Augusta Operations and Port Playford

Port Augusta Operations is an Australian owned and operated resource and logistics company. We are part of a vertically integrated group of companies with interests in the exploration, mining, logistics, marketing and export of iron ore.

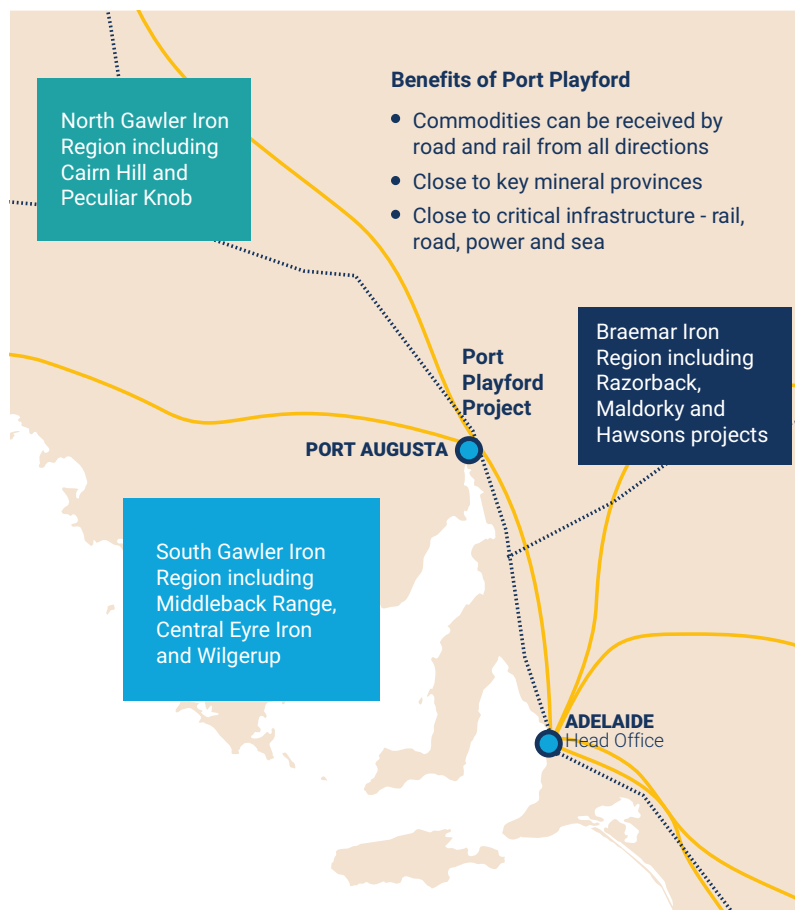
Port Augusta Operations is proposing to transform the former Port Augusta power station site into a bulk commodity export terminal with an initial focus on iron ore. Our proposed \$40 million investment will see the return of commercial shipping to Port Augusta for the first time in 50 years.

This new port will be known as Port Playford in recognition of the former Premier Sir Thomas Playford and his role in the establishment of the Leigh Creek Coalfield and Port Augusta Power Station.

**Port Augusta Operations has submitted its Development Application to the South Australian Government. We invite you to find out more about this proposal by reading this booklet or by visiting [www.portplayford.com](http://www.portplayford.com)**

Our Development Application involves the development of upgraded and new infrastructure and facilities designed to receive, store and handle iron ore. At this stage, it is anticipated the port will be operational by late 2022.

### Existing magnetite iron ore regions, demonstrating central location of Port Playford



## Project benefits

The proposed export facility is anticipated to deliver the following benefits:

- ✓ **Activation of a currently inactive site and utilisation of infrastructure retained from the former Power Station.**
- ✓ **An estimated capital investment of \$40 million Australian dollars into the state economy**
- ✓ **Upgrade of existing facilities and infrastructure to support both land-based and maritime transport of materials**
- ✓ **Creation of over 100 jobs in the region during construction**
- ✓ **Creation of 80 permanent positions to support ongoing port operations**
- ✓ **Increased support for the export of raw materials from both the Braemar and Middleback Ranges areas and in future, potential to expand to the export of agricultural produce**
- ✓ **Reduced export costs for South Australian iron ore developers due to reduced inland transport costs**
- ✓ **Indirect jobs creation within industries supplying the port and associated mines with goods and services**

## Port Playford Concept Plan

The Concept Plan to the right shows the new and existing infrastructure for the port development.

- The iron ore will be transported to the port using the existing rail line.
- The ore will be unloaded at the existing rail load out facility and transported via enclosed conveyors to the primary ore stockpile shed.
- From here, the ore will be loaded onto a self propelled transshipment barge at the new wharf. The barge will travel to a transshipment area in the Gulf, where the ore will be moved onto larger cargo ships.
- To effectively manage dust on the site, the train load out facility, transfer conveyors, stockpile sheds and transshipment vessel will all be fully enclosed.

The following elements form part of the Development Application:

- Iron ore-offloading facility at the rail line.
- Enclosed conveyor system to transfer ore from the train load out facility to the ore stockpile shed.
- Ore stockpile sheds and associated infrastructure.
- Enclosed conveyor system from the ore stockpile sheds to wharf-side storage sheds.
- Wharf area, including mooring piles, crane platform and transshipment loader.

## Assessment of environmental and marine impacts

Port Augusta Operations has engaged specialists to assess and understand if there are likely to be potential environmental impacts from the proposed port development.

A summary of some of these studies and investigations is provided here.

### Air quality and dust management

- Considered: dust (rail wagons, unloading, stockpiles, conveying, barge loading, barge transport, transshipment).
- Enclosures will be provided where a risk exists.

- Ongoing dust management methods, as previously delivered by Flinders Power, will be continued in line with the Site Closure Plan.










*Impacts considered not likely to be significant.*

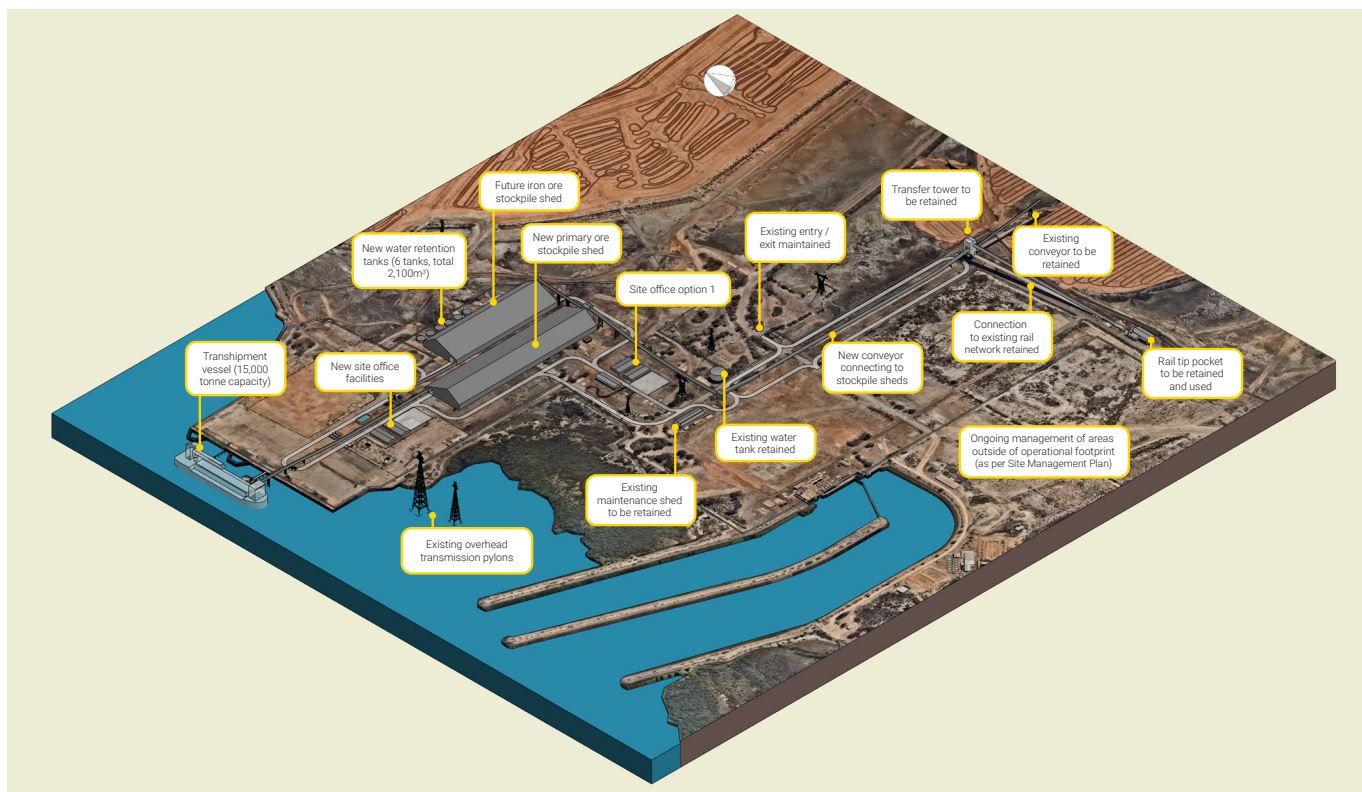
### Noise

- Considered: construction, rail movements, unloading, conveying, reclaim and barge loading.
- Predicted noise levels at all receivers meet daytime and night-time regulatory noise limits.

*Impacts considered not likely to be significant.*

## Milestone map

1954	2000	2015	2016	2016 - 2019		2019		
								
Port Augusta Power Station open	Ownership transferred to Flinders Power Partnership	Leigh Creek mining operations ceased	Port Augusta Power Station closed	Environmental Management Plan developed	Ongoing remediation and site management works	Port Augusta Operations formed	Ongoing site management and investigation activities	Development of Port Concept
				Community Reference Group established	Regular CRG Meetings			Dev't. Application CRG Meeting #1



## Land and marine environment

- No threatened ecological communities likely to be impacted in the construction / operation zone.
- Site contamination will not be mobilised during construction works.
- Limited (approx. 0.5ha) Native Vegetation clearance required.
- No dredging. Limited piling and wharf wall strengthening work.

*Impacts considered not likely to be significant.*

## Aboriginal Heritage

- No Aboriginal sites within 500m of site location. Management Plan for unexpected finds will be developed prior to start of on-site works.

*Impacts considered not likely to be significant.*

## Traffic

- Considered: construction, operational road traffic, impacts of rail movements.
- Predicted traffic generated by the project area during the construction and operational phase is low.

- No further upgrades are required at the Northern Power Station Road and Augusta Highway intersection.






*Impacts considered not likely to be significant.*

## Stormwater and flooding

- Surface water generated is retained on site - no discharges to the Gulf.
- Drainage complies with local planning requirements.

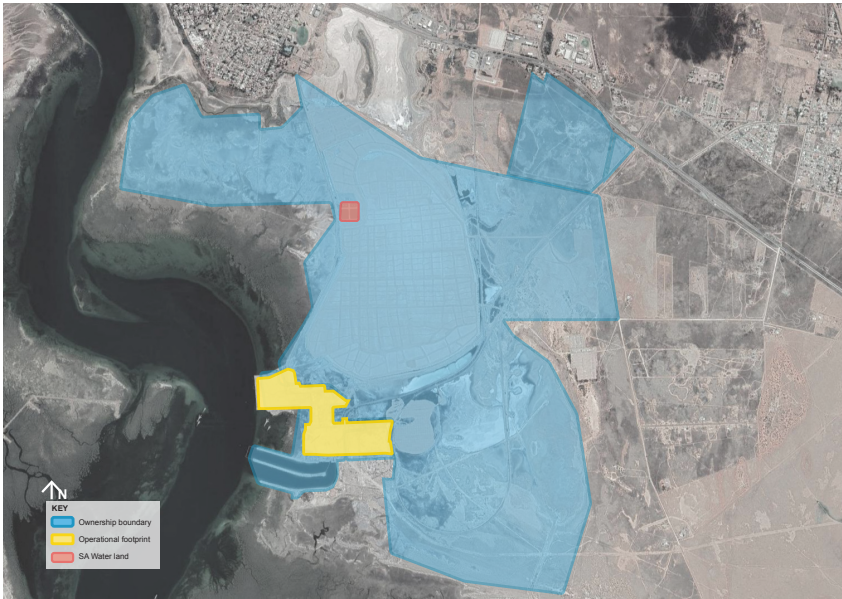
*Impacts considered not likely to be significant.*

**You can find out more at:**  
[www.portplayford.com](http://www.portplayford.com)

2020				2021	2022
 Further site and design investigations	 Development Application lodged for consideration and approval	 Secondary approvals: » Port Operations Licence application » Licence for marine construction activities » Native Vegetation Clearance approval » CEMP approval » ILUA prepared for marine activities » Port Operating Agreement	 Preliminary construction activities (land side)   Preliminary construction activities (marine side)	 Environmental Licence for Bulk Shipping Facilities and Railway Operations	Commence operations
Aboriginal community engagement	Devt. Application CRG Meeting #2	Ongoing community updates and CRG meetings			



## Development footprint



**This image shows footprint of Port Playford and the property boundary of the former Augusta Power Station.**

Port Augusta Operations is committed to delivering this project in line with the existing Site Management Plan and working with the community to ensure that legacy off-site impacts (such as dust) continue to be managed.

The site remediation works have been signed off by a Site Contamination Auditor accredited by the SA Environment Protection Authority.

A Construction Environment Management Plan (CEMP) will be developed and implemented to manage construction-related issues.

## Community reference group meetings

In 2017, a Community Reference Group was created to establish a conduit between community leaders and the site owners.

Independently facilitated, this group has met regularly to guide and shape community engagement and communications activities.

Port Augusta Operations has maintained this successful arrangement and continues to meet with the group on a regular basis.

If you are interested in joining this group, please contact us on 1800 577 322.

## Keeping you updated

Once applications have been reviewed and approved by the relevant parties, activities on the site are likely to take place in a staged manner.

We will continue to keep the local community and other interested stakeholders up to date with site works and progress.

## For further information

To find out more about the proposed development, you can visit our website at:

[www.portplayford.com](http://www.portplayford.com)

If you have any queries or would like to discuss the project in person, please contact us.

**Call:** 0428 063 924

**Email:** [community@portplayford.com](mailto:community@portplayford.com)